

WE LOVE

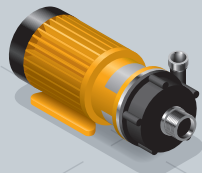
...

...

# PUTTING OUR HEADS TOGETHER FOR YOU

You know, we're really proud of our quality standards. But we also know just as well as you do that high quality alone doesn't make the crucial difference. So, it's important to us that we make a lot of things straightforward and possible for you as our customer - even if they sometimes appear almost impossible.

This matters most in difficult circumstances, and, for example, when we come to your rescue in the event of a fault. Our strength is your advantage: in these situations, we always find a quick solution. And you can be sure it'll be one that helps you safely prevent or eliminate operational downtime.



Whatever happens, we're happy to put our heads together for you. We'll never let you down when it comes to your orders, either. Quite simply because we deliver very quickly - within 24 hours, if necessary. We hope that's fast enough for you ...

We love talking about our quality standards, and with good reason: our employees pour their expertise and passion into every SCHMITT pump. And it's been that way for decades. We're absolutely convinced by our products, because the technology is tried and tested. We're proud of our services, because they help our industrial and trade customers move forward. And that's just typical of SCHMITT.

...  
FINDING THE BEST  
SOLUTION FOR YOU

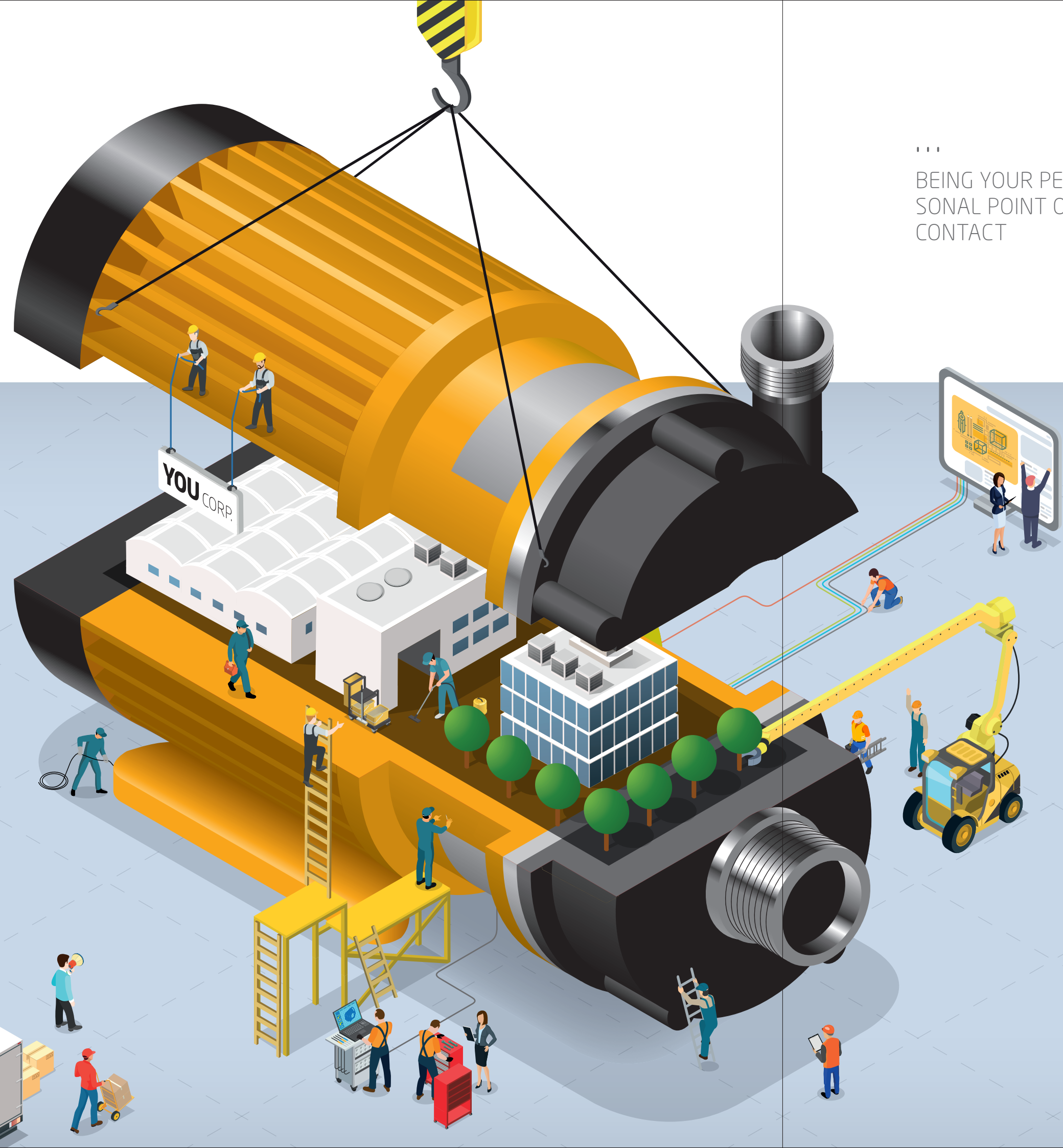
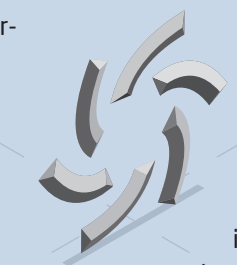
We don't just give you first-class pumps that live up to their promises. As a customer, we'll always provide you with the solution that fits 100% with your operational processes. This saves time, money, ... and your nerves. And it also means an exceptionally high level of operational safety.

How do we do it? We never miss the chance to take a closer look at your facilities. Ideally, we get personal - and sit around a table with your experts.

We love taking these opportunities to incorporate our wealth of expertise into your plans - and to integrate your know-

ledge into our concepts too, if possible. Only by harmonising these two factors can we be sure that the finished systems will run smoothly.

However, perhaps the most important thing is that we feel we are one with our customers. In other words, we see ourselves as a team. And that also applies to our partners in the specialist trade. Quite simply because we're all pulling in the same direction. This is how we bring together optimal planning and first-class advice. As a team, we put systems in place that always work perfectly.



...  
BEING YOUR PER-  
SONAL POINT OF  
CONTACT

Since our company was founded in 1964, we've been a leader in everything we do. We specialise in industrial pumps for conveying corrosive and high-purity media. We work with flow rates of up to 35 m<sup>3</sup>/h and delivery heads of up to 40 m.

Please don't hesitate to contact us if you have any questions. We're sure that our experts will have the right answers for you!

WE MAKE  
THINGS HAPPEN

**BECAUSE FOR US, IT'S ALWAYS ABOUT YOU**  
At the start of a project, we don't just think about what we could sell. Instead, we listen to our customers. This way, we find the right answers and the solution to really help you. Worldwide, our more than 5,000 customers and over 100,000 pumps are proof of our success.

**BECAUSE WE'LL COME TO YOUR RESCUE**  
At our company, everything runs smoothly in the vast majority of cases. That's because we aim to prevent problems from the outset with robust planning and first-class pumps. But we all know that it's impossible to avoid pump failure 100% of the time. In the event of a problem, we respond at lightning speed, ensuring that everything's up and running again the same day.

**BECAUSE WE DON'T KEEP OUR KNOWLEDGE TO OURSELVES**  
Whenever we talk to engineers or work with dealers, smart ideas are the natural result. We firmly believe that when knowledge is shared, it grows. So we're happy to turn our customers into experts. We provide competent advice to the specialist trade. This means that, together with our customers, we can grow beyond all our expectations.



**SCHMITT-Kreiselpumpen GmbH & Co. KG**

Einsteinstraße 33

76275 Ettlingen, Germany

Fax: +49 7243 5453-22

E-mail: [sales@schmitt-pumpen.de](mailto:sales@schmitt-pumpen.de)

**Direct line:**

Telephone: +49 7243 5453-0

[schmitt-pumpen.de](http://schmitt-pumpen.de)